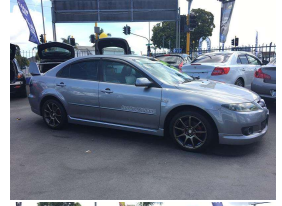


2006 Mazda Atenza Sport Hatch



VEHICLE INFORMATION

Cash Price

Includes GST

\$10,995

+ on-road-costs of \$400

Finance this vehicle
from only

\$76.47

per week*

Total Amount Payable

\$15,906.47



Body

5 door, Hatchback

Odometer

149,366 km

Engine

2300 cc

Fuel Type

Petrol

Transmission

Auto

Wheels

-

VIN

7AT0C139X17404333

Reg No.

-

Ext Colour

Grey

History

-

Seats

5 seats

Interior

Black, Leather covers

Audio

CD Player

Stock ID

5582

Janssen Holdings Limited

Gain peace of mind
with Mechanical
Breakdown Insurance.
Ask us how.

Exterior Features

- » Alloys
- » Body Kit (Factory)
- » Electric Mirrors
- » Electric Windows
- » Immobiliser
- » Rear Wiper
- » Spoiler
- » Sports Exhaust

Interior Features

- » Air Bag(s)
- » Air Conditioning
- » All Electrics
- » Car Stereo
- » CD(s)
- » Central Locking
- » Climate Control
- » Keyless Entry
- » Multi Function Steering Wheel

Mechanical Features

- » AA Certified
- » ABS Braking
- » EFI
- » Power Steering
- » Special
- » Timing Chain
- » Tiptronic



Bill Russ Motors, Phone 09 277 4418, Email bill@billrussmotors.co.nz
293 Shirley Road, Papatoetoe, Auckland 2025, New Zealand
www.billrussmotors.co.nz

* Finance calculation based on a 48 month term, no deposit and with an example annual fixed interest rate of 14.95%. Actual interest rate may be higher or lower. Includes an establishment fee of \$523.00. Full term total amount payable of \$15,906.47. Estimate only, not an offer of finance. Terms, conditions and lending criteria apply.